

**Quarterly Review
December 31, 2006**

Fund Goal

The Fund's principal investment goal is to seek long-term capital appreciation.

Fund Facts

Symbol: AVALX
CUSIP: 00761L102
Net Assets: \$383.4 Million
Inception: May 15, 1998

The Aegis Value Fund is offered by prospectus only. The investor should consider the Fund's investment objectives, risks, charges, and expenses. The prospectus contains this and other information about the Fund and should be read carefully before investing. To obtain a copy of the prospectus, please call us at 1-800-528-3780 or visit www.aegisvaluefund.com.

The hypothetical investment graph compares a \$10,000 investment in the Fund with a similar investment in the Russell 2000 Value Index. Returns reflect the reinvestment of income dividends and capital gains, if any, as well as fees and expenses.

INVESTMENT PHILOSOPHY

The Fund invests primarily in small U.S. companies with shares that can be purchased at low multiples of book value. Book value is an accounting measure that reflects the value of assets minus the value of liabilities held on a company balance sheet. The Fund may hold cash or cash equivalents when securities meeting its investment criteria are not available.

KEY PORTFOLIO ATTRIBUTES*

Equity Statistics

Portfolio Price-to-Book	86.5%
Portfolio Price-to-Revenue	34.3%
Weighted Avg. Mkt. Cap	\$791.8 Mil

PERFORMANCE as of 12/31/2006

<u>Time Period</u>	<u>AVALX</u>
Fourth Quarter	12.6%
Year to Date	17.8%
One Year	17.8%
Three Year	11.6%
Five Year	13.8%
Since Inception	15.2%

TOP FIVE HOLDINGS

Security

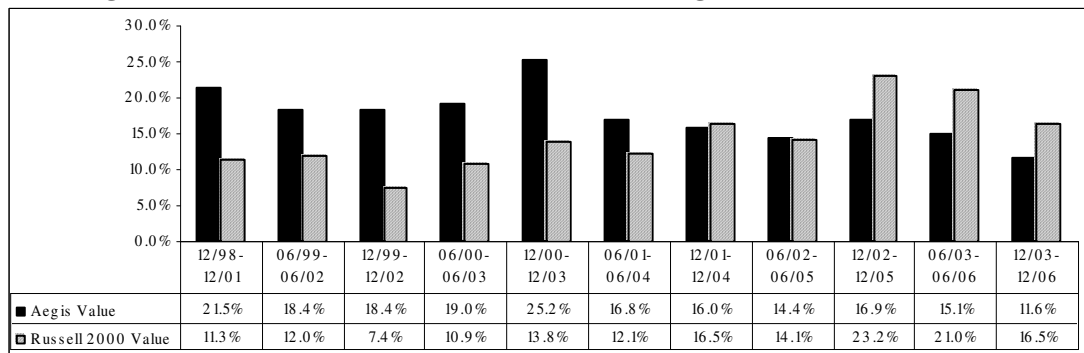
<u>Security</u>	<u>Portfolio Value</u>
CF Industries Holdings, Inc.	6.3%
PMA Capital Corp. Cl. A	6.3%
Alliance One International Inc.	4.7%
Audiovox Corporation Class A	3.7%
Superior Industries International Inc.	3.3%

Russel 2000 Value

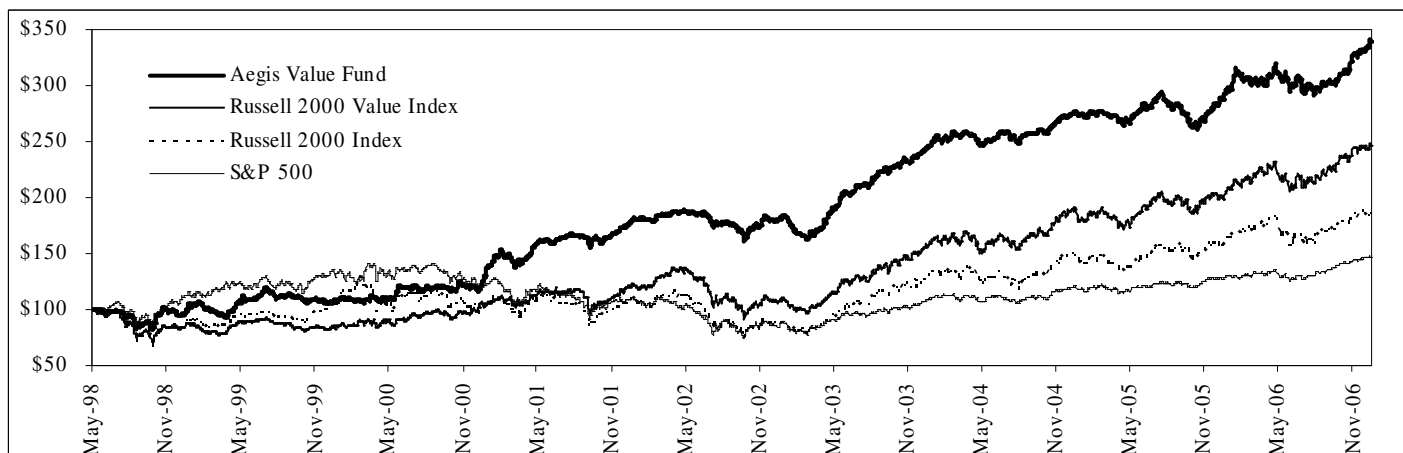
Performance data quoted represents past performance and does not guarantee future results. Current performance may be lower or higher than the performance data quoted. The investment return and principal value will fluctuate so that upon redemption, an investor's shares may be worth more or less than their original cost. For performance data current to the most recent month end, please call us at 800-528-3780 or visit www.aegisvaluefund.com. The Fund has an annualized expense ratio of 1.38%.

* Portfolio Attribute statistics do not include the following five holdings due to their insignificant market values and/or unavailability of current book value data: Acceptance Insurance Companies, Integrated Telecom Express Inc., Liquid Audio, MIIX Group, and Sea Containers Cl.A.

Aegis Value Fund-Historical Performance (Net) Rolling Three Year Annual Returns



HISTORICAL INVESTMENT RETURN in the Aegis Value Fund and common benchmark indices



TOP FIVE HOLDINGS

1. CF Industries Holdings, Inc. (6.3%) - Price-to-Book = 1.8

One of the largest manufacturers and distributors of nitrogen and phosphate fertilizer products in North America. The operations are organized into two business segments: the nitrogen fertilizer business and the phosphate fertilizer business. The core market and distribution facilities are concentrated in the midwestern U.S. grain-producing states.

2. PMA Capital Corp. Class A (6.3%) - Price-to-Book = 0.7

Property and casualty insurer primarily offering workers' compensation in the eastern United States. Run-off operations includes prior reinsurance and excess and surplus lines business. Management is seeking improved returns on capital in its primary insurance operations and successful wind-down of run-off operations.

3. Alliance One International Inc. (4.7%) - Price-to-Book = 2.6

One of only two global independent leaf tobacco merchants. Selects, purchases, processes, stores, packs and ships tobacco grown in more than 45 countries, serving manufacturers of cigarettes and other consumer tobacco products in more than 90 countries around the world. Recent results affected by appreciation of the Brazilian currency among other factors. Substantial rationalization and cost-cutting is underway.

4. Audiovox Corp. Class A (3.7%) - Price-to-Book = 0.8

A leading international distributor in the mobile and consumer electronics industries. Markets products under brand names including Audiovox, Jensen, Pursuit, Code-Alarm, Car Link, Movies 2 Go, Mag-nate, Mac Audio, Heco, Acoustic Research, Advent, and Phase Linear as well as private labels. The company sold its low margin cell-phones business and seeks to replace the revenue stream with higher margin electronic products.

5. Superior Industries International Inc. (3.3%) - Price-to-Book = 0.9

A leading designer and manufacturer of aluminum road wheels for North American automobile manufacturers. The company serves its customers from its manufacturing base in the United States, Mexico, and Hungary. Superior continues to restructure its operations to provide world-class quality and cost from its Mexican operations. The company has net cash on its balance sheet and limited union exposure.

The information comprised on this Quarterly Review is not, nor is it held out to be, a solicitation of any person to take any form of investment decision. The information does not constitute advice or a recommendation by Aegis Financial Corporation and should not be relied upon in making (or refraining from making) any decision relating to investments or any other matter. You should consult your own independent financial adviser and obtain professional advice before exercising any investment decisions or choices based on information featured in this Quarterly Review.

PORTFOLIO COMPOSITION

<u>Security Type</u>	<u>% Of Portfolio Value</u>
Domestic Common Stock	67.4%
Foreign Stocks Lised on U.S. Exchange	5.4%
Foreign Stocks Lised on Foreign Exchange	2.1%
Warrants	1.1%
Cash and U.S. Treasuries	<u>24.0%</u>
	<u>100.0%</u>

VALUATION—PRICE-TO-BOOK

<u>Price to Book Value</u>	<u>% Of Equity Portfolio Value</u>
0% To 50%	9.5%
50% To 100%	39.4%
100% To 150%	31.0%
Greater Than 150%	<u>20.0%</u>
Total	<u>100.0%</u>

MARKET CAPITALIZATION

<u>Market Cap.</u>	<u>% Of Equity Portfolio Value</u>
\$0 To \$50	6.6%
\$50 To \$100	6.9%
\$100 To \$500	49.7%
\$500 To \$1000	12.9%
\$1000 To \$1,500	14.8%
Greater Than \$1,500	<u>9.0%</u>
Total	<u>100.0%</u>

SECTOR BREAKDOWN

<u>Sector</u>	<u>% of Equity Portfolio Value</u>
Consumer Discretionary	33.8%
Financials	21.5%
Materials	20.4%
Industrials	10.9%
Consumer Staples	7.7%
Utilities	2.8%
Energy	2.3%
Telecommunication Services	0.5%
Information Technology	0.1%
Health Care	<u>0.0%</u>
	<u>100.0%</u>